

DOYLE COMBO SPLINT

DESCRIPTION:

The **Doyle Combo Splint** combines all the benefits of the original nasal airway splint with the expandability and comfort of sponge. This patented device is designed for use postoperatively following a septal and/or turbinate procedure. Our exclusive RHINOCELL® sponge portion expands after introduction of fluid and provides a snug yet comfortable fit. The silicone splint portion serves to stabilize the septum while providing an airway through the integral tube.

INDICATIONS FOR USE:

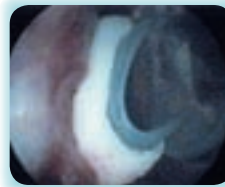
To maintain a nasal airway while providing septal support following surgery.

SUPPLIED:

Sterile, 10 splints per dispenser carton
(1 pair/pouch, 5 pairs/carton)

PRODUCT CODE:

60-202 DOYLE COMBO SPLINT



FEATURES

- Dual-purpose patented design.
- Superior liquid absorption and wicking.
- Integral airway and suture holes.